

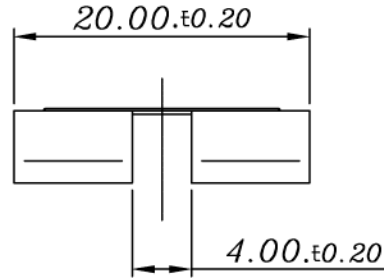
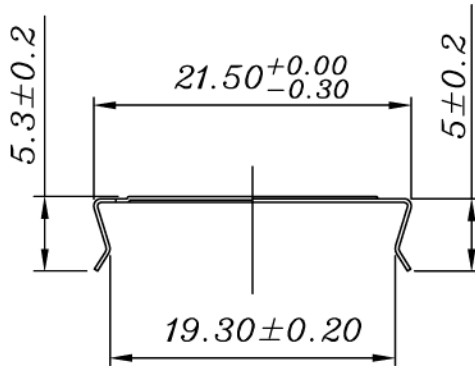
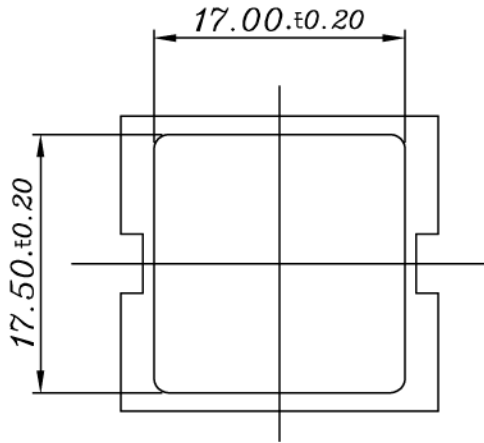
LEPCOS (North-West Laboratory)

http://ferrite.ru Tel/fax +7-812-369-11-54

St-Petesburg, Russia

REVISIONS

REV	SYM	DRAFTER	CHECKER	DATE
△		T.S.LII	W.H.HSU	03/15/03
△		T.S.LII	W.H.HSU	05/29/03
△		T.S.LII	W.H.HSU	06/30/03



T=0.3

PART NO.	E-032C2							
DWG NO.	EFD20 clamp E-032C2							
TBI NO.	MATERIAL (CLIP)							
407-01041.1	SUS 301			PART NO.	REV	MODE NO	PIN LOCATION	
				Finish: 1-1. Immersion gold on terminal. Thickness gold $0.075 \mu\text{m}$ ($3 \mu\text{inches}$) min, Base nickel $0.625 \mu\text{m}$ ($25 \mu\text{inches}$) min. 1-2. Immersion Sn on terminal. Terminal:Sn plating, $100, 5 \mu\text{m}$ ($200 \mu\text{inches}$) min Base nickel $0.625 \mu\text{m}$ ($25 \mu\text{inches}$) min. 1-3. Immersion Sn/Pb on terminal. Terminal:Sn/Pb plating, $90/10, 5 \mu\text{m}$ ($200 \mu\text{inches}$) min Base nickel $0.625 \mu\text{m}$ ($25 \mu\text{inches}$) min. (for pin GW type) 2. Coplanarity deviation: 0.004 inches max.			TOLERANCE	.X ± 0.15 .XX ± 0.10 .XXX ± 0.05
							UNIT	m/m
							SCALE	2 : 1
							REV	3