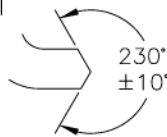
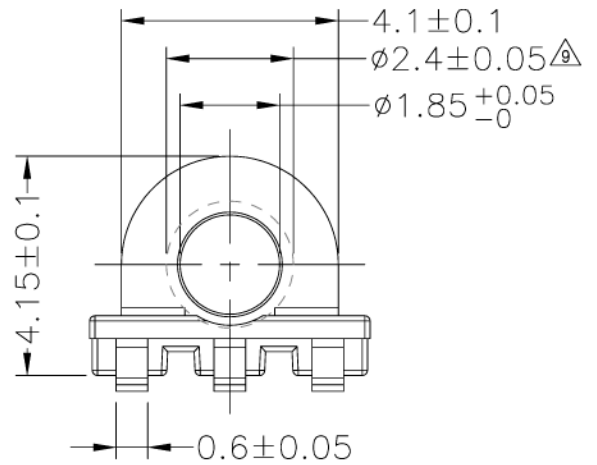
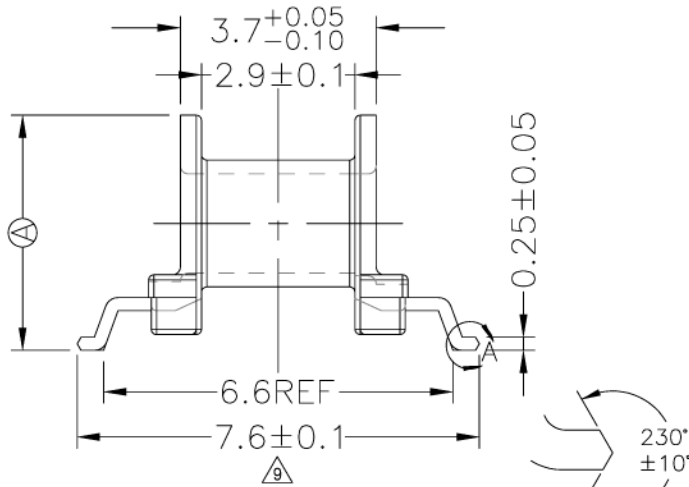
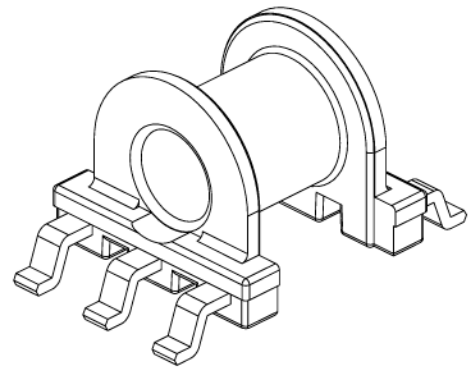
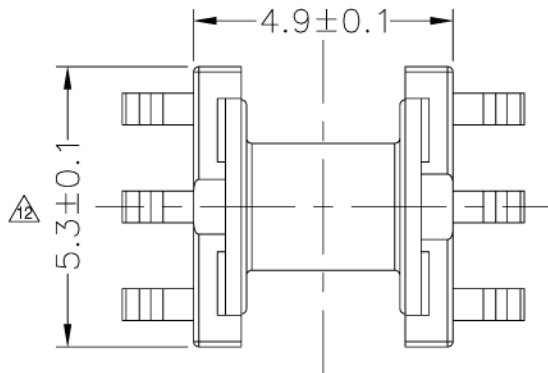


LEPCOS (North-West Laboratory)

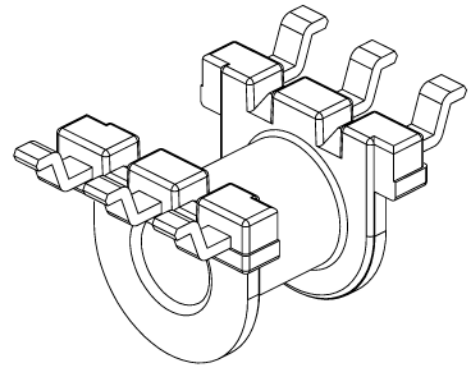
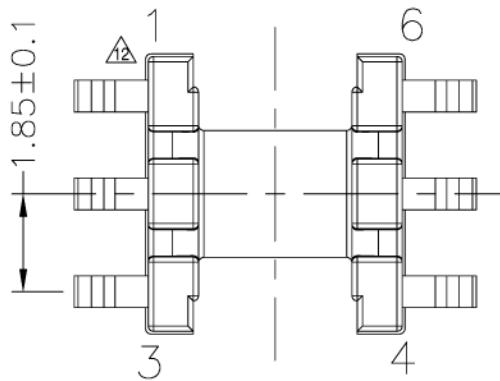
http://ferrite.ru Tel/fax +7-812-369-11-54
St-Petesburg, Russia

REVISIONS

REV	SYM	DRAFTER	CHECKER	DATE
△0		S.Y.TANG	W.H.HSU	10/13/07
△1		S.Y.TANG	W.H.HSU	10/19/07
△2		S.Y.TANG	W.H.HSU	10/27/07

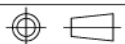


DETAIL:A
PATENTED



DWG NO. EP5-6P-GW-1.85-A-1

PART NO.	MATERIAL (BOBBIN)	MATERIAL (TERMINAL)	TERMINAL (PLATING)	PIN ALLOCATION	NOTE
TBI-103-01011.103	PM-9630	P.B	Sn	ALL PIN (A) = 4.45±0.15	



TOLERANCE: .X±0.15 .XX±0.10 .XXX±0.05

UNIT : m/m

SCALE 7:1

Finish: 1. Pb wire Immersion Sn on terminal : Thickness:Sn plating, 100,5 μm (200 μ inches) min, Base nickel 0.625 μm (25 μ inches) min.
2. CP wire Immersion Sn on terminal : Thickness:Sn plating, 100,5 μm (200 μ inches) min.
3. Coplanarity deviation: 0.10 mm (0.004 inches) max.

REV 12