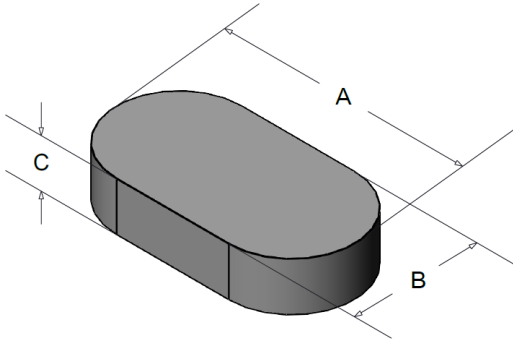




110 Delta Drive  
 Pittsburgh, PA 15238  
 NAFTA Sales: (1)800-245-3984  
 HK Sales : (852)3102-9337  
 magnetics@spang.com  
 www.mag-inc.com

# 00K8430R07501



| Kool M $\mu$<br>Permeability ( $\mu$ ) | Core Marking |             |
|--|--------------|-------------|
|  | Lot Number   | Part number |
| 60                                     | XXXXXX       | K8430R07501 |

|               | Dimensions |       | Tolerance ( $\pm$ ) |       |     | Packaging |
|---------------|------------|-------|---------------------|-------|-----|-----------|
|               | (mm)       | (in)  | (mm)                | (in)  |     |           |
| <b>A</b>      | 84.0       | 3.31  | 0.5                 | 0.020 |     |           |
| <b>B</b>      | 30         | 1.18  | -                   | -     | Nom |           |
| <b>C</b>      | 23.0       | 0.91  | 0.5                 | 0.020 |     |           |
| <b>Radius</b> | R15        | R0.59 | -                   | -     | Nom |           |

| Physical Characteristics                 |            | Temperature Rating       | Note:  |
|--|------------|--------------------------|--|
| Volume V <sub>e</sub> (mm <sup>3</sup> ) | Weight (g) | Curie Temperature: 500°C | Cosmetic Standard: Magnetics' Kool M $\mu$ shapes criteria for appearance. |
| 53,000                                   | 295        |                          |  |

