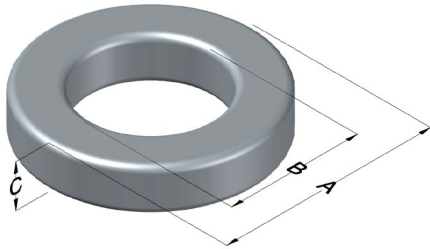




0055383A2

110 Delta Drive
 Pittsburgh, PA 15238
 NAFTA Sales: (1)800-245-3984
 HK Sales : (852)3102-9337
 magnetics@spang.com
 www.mag-inc.com



MPP Permeability (μ)	A_L (nH/T ²)	Core Marking			Coating Color
		Lot Number	Part Number	Inductance Grade	
14	10 \pm 8%	XXXXXX	55383A2	N/A	Gray

Dimensions	Uncoated		Coated Limits			Packaging
	(mm)	(in)	(mm)	(in)		
OD (A)	17.3	0.680	18.1	0.710	max	Bulk Pack 4 bags/box Box Qty= 2000 pcs
ID (B)	9.65	0.380	9.01	0.355	min	
HT (C)	6.35	0.250	7.12	0.280	max	

Electrical Characteristics			Physical Characteristics						
Watt Loss @ 100 kHz, 100mT max(mW/cm ³)	DC Bias min (A-T/cm)		Voltage Breakdown wire to wire min (V _{AC})	Break Strength min (kg)	Window Area W _A (mm ²)	Cross Section A _e (mm ²)	Path Length L _e (mm)	Volume V _e (mm ³)	Weight (g)
	3000	80%							
	170	214							

Winding Information					Temperature Rating	
Winding Length Per Turn				Wound Coil Dimensions (mm)		Curie Temp: 460 °C
Winding Factor	(mm)	Winding Factor	(mm)	Maximum OD (70%)	24.9	Coating Temp (Continuous up to): 200 °C
				Maximum HT (70%)	16.3	
0%	23.2	40%	28.0	Surface Area (mm ²)		Notes:
20%	25.6	45%	28.6	Unwound Core		
25%	26.2	50%	29.3	40% Winding Factor		
30%	26.6	60%	30.8			
35%	27.4	70%	32.4			

