

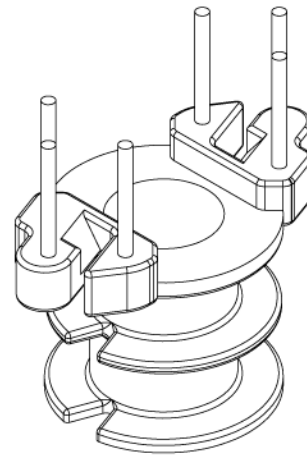
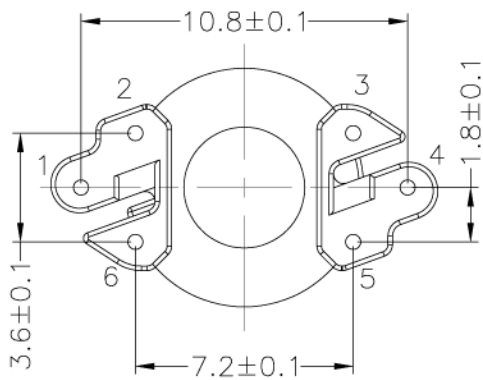
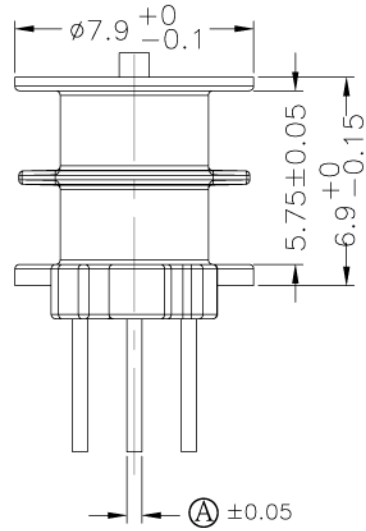
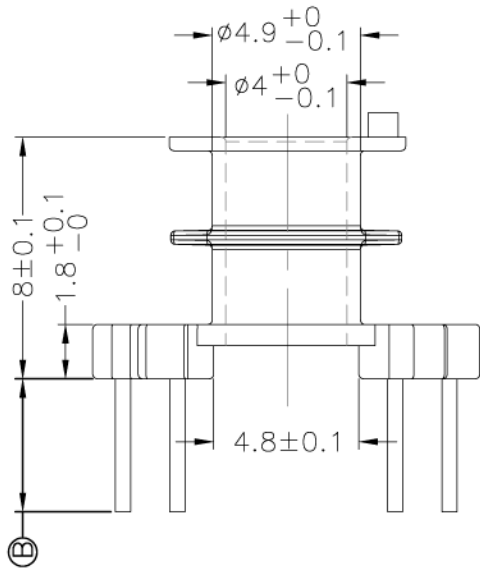
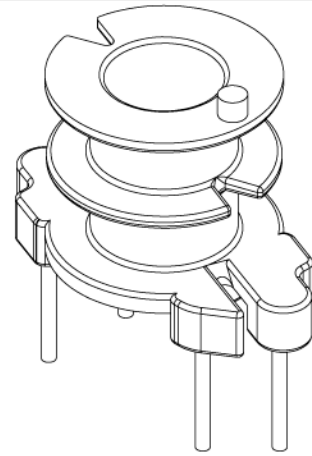
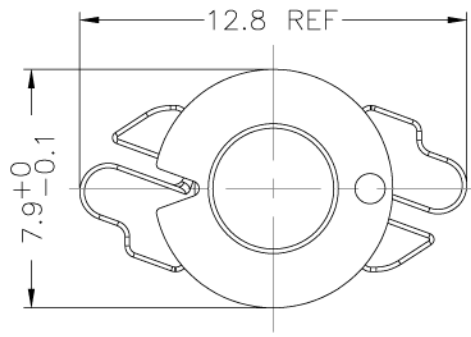
**LEPCOS (North-West Laboratory)**

http://ferrite.ru Tel/fax +7-812-369-11-54

St-Petesburg, Russia

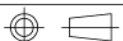
REVISIONS

REV	SYM	DRAFTER	CHECKER	DATE
10		T.S.LII	W.H.HSU	07/22/06
11		S.M.SHIH	S.M.SHIH	10/26/06
12		S.Y.TANG	G.F.YANG	01/16/08



DWG NO. Bobbin RM4 2 sec 6 pin E-041-1

PART NO.	MATERIAL (BOBBIN)	MATERIAL (TERMINAL)	TERMINAL (PLATING)	PIN ALLOCATION	NOTE
E-041-1	PM-9630	C.P WIRE	Sn	ALL PIN , (A)=SQ.0.4 (B)=4.4±0.3	



TOLERANCE: .X±0.15 .XX±0.10 .XXX±0.05

UNIT : m / m

SCALE 4 : 1

Finish: 1. Pb wire Immersion Sn on terminal : Thickness:Sn plating,100,5 μm (200 μ inches) min,Base nickel 0.625 μm (25 μ inches) min.  
 2. CP wire Immersion Sn on terminal : Thickness:Sn plating,100,5 μm (200 μ inches) min.  
 3. Coplanarity deviation: 0.10 mm (0.004 inches) max.

REV 12