

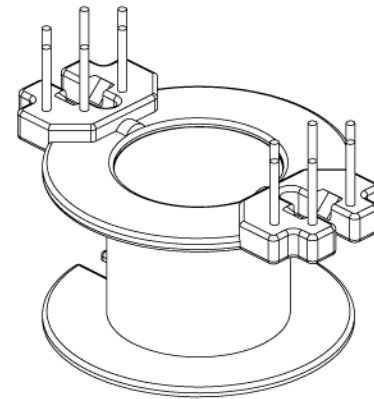
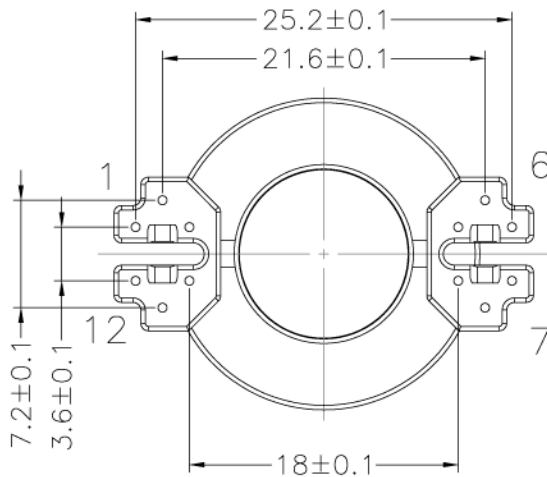
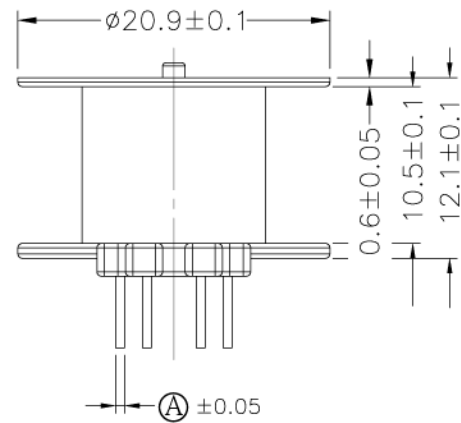
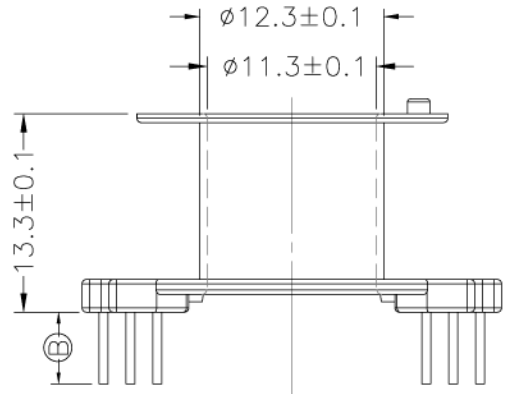
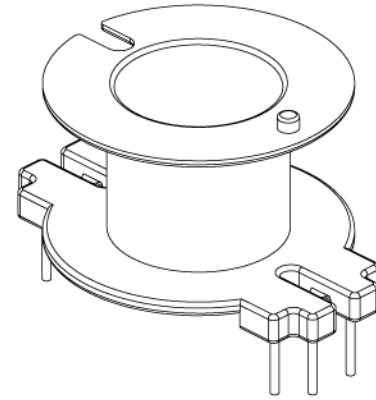
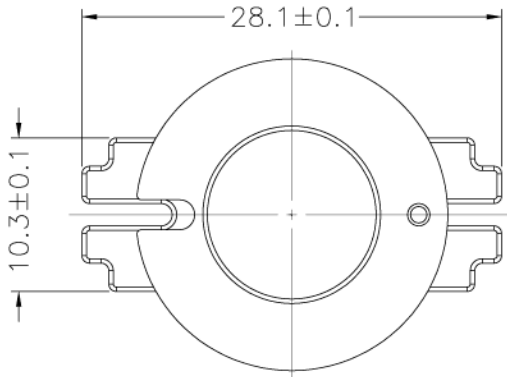
# LEPCOS (North-West Laboratory)

http://ferrite.ru Tel/fax +7-812-369-11-54

St-Petersburg, Russia

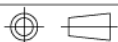
## REVISIONS

REV	SYM	DRAFTER	CHECKER	DATE
△		T.S.LII	W.H.HSU	01/30/07
△		S.Y.TANG	G.F.YANG	11/14/07
△		S.Y.TANG	G.F.YANG	05/30/08



DWG NO. Bobbin RM10 1 sec 12 pin E-047

PART NO.	MATERIAL (BOBBIN)	MATERIAL (TERMINAL)	TERMINAL (PLATING)	PIN ALLOCATION	NOTE
E-047	PM-9630	C.P WIRE	Sn	ALL PIN , (A)= $\varnothing$ 0.6 , (B)= $4.8\pm 0.3$	



TOLERANCE: .X $\pm$ 0.15 .XX $\pm$ 0.10 .XXX $\pm$ 0.05

UNIT : m/m

SCALE 3 : 1

Finish: 1. Pb wire Immersion Sn on terminal : Thickness:Sn plating,100,5  $\mu$ m (200  $\mu$  inches) min,Base nickel 0.625  $\mu$ m (25  $\mu$  inches) min.  
 2. CP wire Immersion Sn on terminal : Thickness:Sn plating,100,5  $\mu$ m (200  $\mu$  inches) min.  
 3. Coplanarity deviation: 0.10 mm (0.004 inches )max.

REV 9