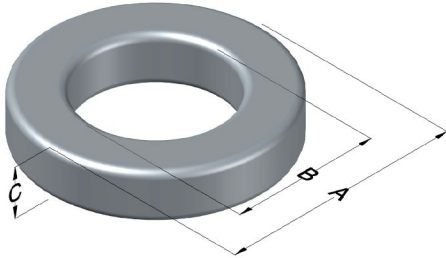




0077165A7

110 Delta Drive
 Pittsburgh, PA 15238
 NAFTA Sales: (1)800-245-3984
 HK Sales : (852)3102-9337
 magnetics@spang.com
 www.mag-inc.com



Kool M μ Permeability (μ)	A _L (nH/T ²)	Core Marking			Coating Color
		Lot Number	Part Number	Inductance Grade	
26	78 ± 8%	XXXXXX	77165A7	N/A	Black

Dimensions	Uncoated		Coated Limits			Packaging
	(mm)	(in)	(mm)	(in)		
OD (A)	165.1	6.500	166.5	6.555	max	Cardboard cut-outs Box Qty= 6 pcs
ID (B)	102.4	4.032	101.0	3.977	min	
HT (C)	31.75	1.250	33.15	1.305	max	

Electrical Characteristics			Physical Characteristics						
Watt Loss @ 50 kHz, 50mT Max (mW/cm ³)	DC Bias min (A-T/cm)		Voltage Breakdown wire to wire min (V _{AC})	Break Strength min (kg)	Window Area W _A (mm ²)	Cross Section A _e (mm ²)	Path Length L _e (mm)	Volume V _e (mm ³)	Weight (g)
	180	80%							
	75.5	99.3							

Winding Information				Temperature Rating	
Winding Length Per Turn				Wound Coil Dimensions (mm)	
Winding Factor	(mm)	Winding Factor	(mm)	Maximum OD (70%)	228
				Maximum HT (70%)	103
0%	132	40%	184	Surface Area (mm ²)	
20%	158	45%	192		
25%	164	50%	199	Unwound Core	
30%	170	60%	215	40% Winding Factor	
35%	178	70%	233	101,000	
				Curie Temp: 500°C	
				Coating Temp (Continuous up to): 200°C	
				Notes:	

