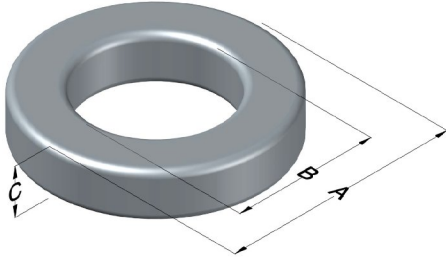




0077059A7

110 Delta Drive
 Pittsburgh, PA 15238
 NAFTA Sales: (1)800-245-3984
 HK Sales : (852)3102-9337
 magnetics@spang.com
 www.mag-inc.com



Kool M μ Permeability (μ)	A _L (nH/T ²)	Core Marking			Coating Color
		Lot Number	Part Number	Inductance Grade	
60	43 ± 8%	XXXXXX	77059A7	N/A	Black

Dimensions	Uncoated		Coated Limits			Packaging
	(mm)	(in)	(mm)	(in)		
OD (A)	22.9	0.900	23.7	0.930	max	Bulk Pack 4 bags/box Box Qty= 1000 pcs
ID (B)	14.0	0.550	13.3	0.525	min	
HT (C)	7.62	0.300	8.39	0.330	max	

Electrical Characteristics			Physical Characteristics						
Watt Loss @ 100 kHz, 100mT max(mW/cm ³)	DC Bias min (A·T/cm)		Voltage Breakdown wire to wire min (V _{AC})	Break Strength min (kg)	Window Area W _A (mm ²)	Cross Section A _e (mm ²)	Path Length L _e (mm)	Volume V _e (mm ³)	Weight (g)
	1000	80%							
	31.0	69.1							

Winding Information					Temperature Rating	
Winding Length Per Turn				Wound Coil Dimensions (mm)		Curie Temp: 500°C
Winding Factor	(mm)	Winding Factor	(mm)	Maximum OD (70%)	32.6	Coating Temp (Continuous up to): 200°C
				Maximum HT (70%)	19.8	
0%	27.0	40%	33.9	Surface Area (mm ²)		Notes:
20%	30.5	45%	34.9	Unwound Core		
25%	31.3	50%	35.9	40% Winding Factor		
30%	32.0	60%	38.0			
35%	33.1	70%	40.4			

