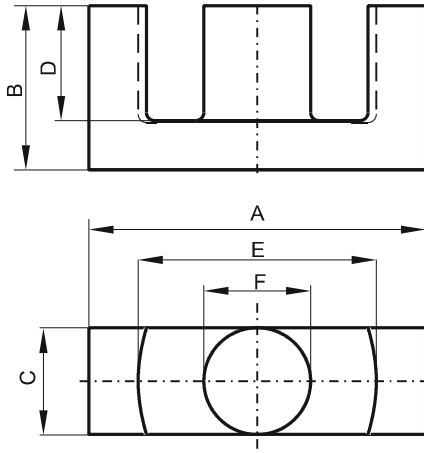


DIMENSIONS



(mm)	Nominal:	Tol. min.:	Tol. max.:
A	35.0	-1.6	0.0
B	17.3	-0.2	+ 0.2
C	11.1	-0.6	0.0
D	11.8	0.0	+ 0.6
E	25.6	0.0	+ 1.4
F	11.1	-0.6	0.0
Eff. Parameters			
Ae mm ²	Amin mm ²	le mm	Ve mm ³
97.1	91.6	78.6	7640

INDUCTANCE

AL value (nH)	Test conditions
Nom: 2707 Min.: 2030	10 kHz, < 0.5 mT, 25 °C

MARKING

R EC

CORE LOSSES

P _i max	Test conditions
96 mW/cm ³ (0.73 W/set)	100 kHz, 100 mT, 100 °C
550 mW/cm ³ (4.2 W/set)	100 kHz, 200 mT, 100 °C

NOTE

Spec. modifications	Previous	Revised
2005-06-22	A=33.43 Min. A=34.95 MAX E=26.97 Max. Losses: General R material	A=33.4 Min. A=35.0 Max. E=27.0 Max. Losses: Detail as indicated