

SPECIFICATION FOR APPROVAL

CUSTOMER	Lepcos
P/N	Vertical DRH-26*20*14 (black)
SPEC.NO.	0001A
DATE	2019/11/12

Customer's Approval : PLS fax your approved data sheet and suggestion to our company in a month.If not,we assume that you have approved our data sheet.

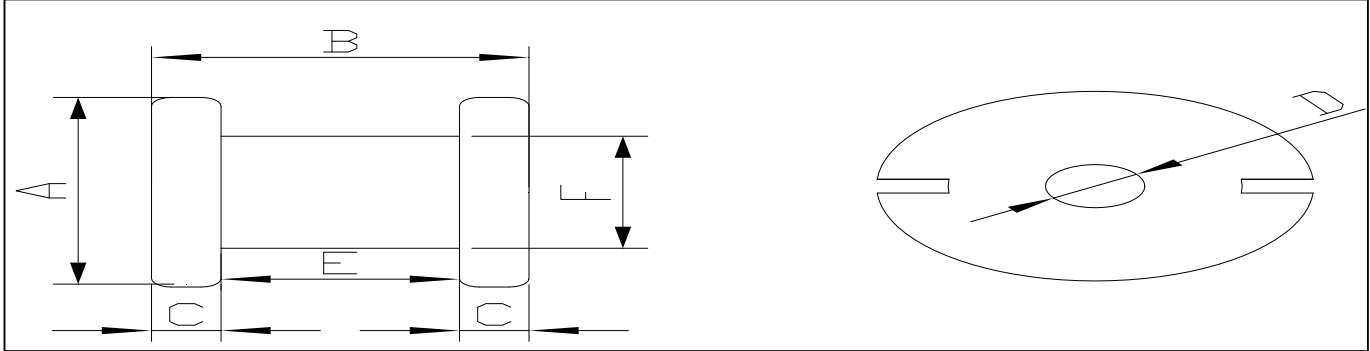
承认 Approved by	审核 Checked by	作成 Prepared by
Vivian	William	Mark

客户承认 Admitted by

SPECIFICATION

CUSTOMER	Lepcos	MATERIAL	F1
P/N	Vertical DRH-26*20*14 (black)	SPEC.NO.	0001A
Shirui's P/N	Vertical DRH-26*20*14 (black)		

1. Shape and Dimensions unit:mm



Specification and Testing Instrument

A	B	C	D	E	F				
26.0	20.0	3.8	5.0	13.0	14.0				
Projector									

2. Characteristics

Item	Specification	Test Condition	Testing Instrument
L(uH)			

Note: 1. appearance of cores must be uniform, smooth, clean.

2. center leg must be in line with two blades.

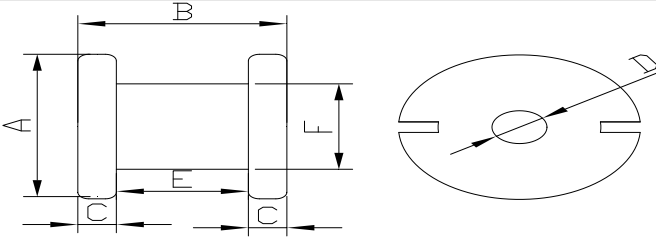
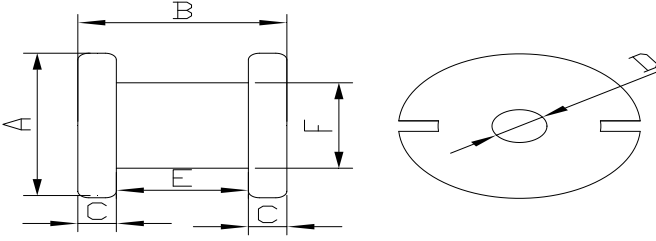
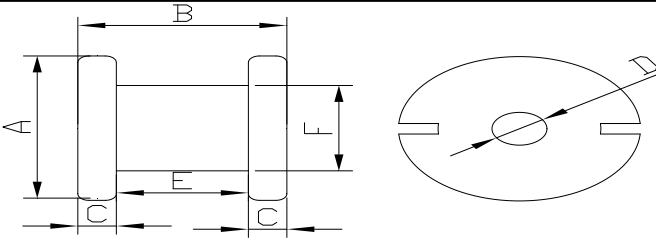
3. Standard of appearance inspection

Standard of appearance inspection: critical defect, major defect judged by "0,1"

Note: if customer have special requirement, standard of inspection will be according to the agreement with customer.

Standard of appearance inspection

Part name: DRH-CORE

Item	Position	Standard	Reference
D e f e c t	Upper surface		① Breakage area less than 0.1 square millimeters, depth less than 0.50, no more than 2 places breakage on the same surface.
	Slot		① Area of slot less than 0.1 square millimeters, no more than 1 defect in the same slot
B u m p	Overall		① Height of bump is lower than 0.1mm
N o t e	blades	one blade has gap, one doesn't.	