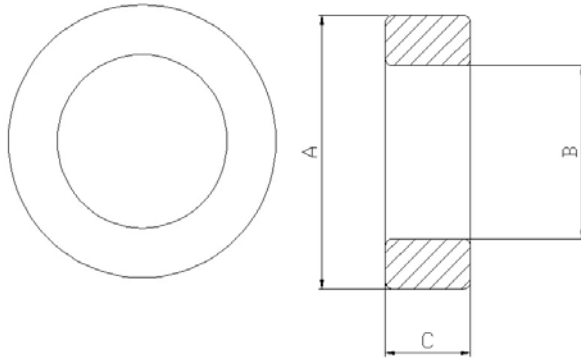
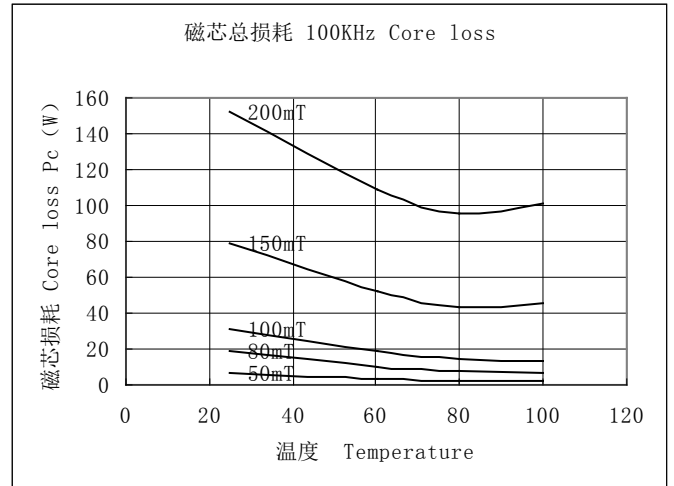
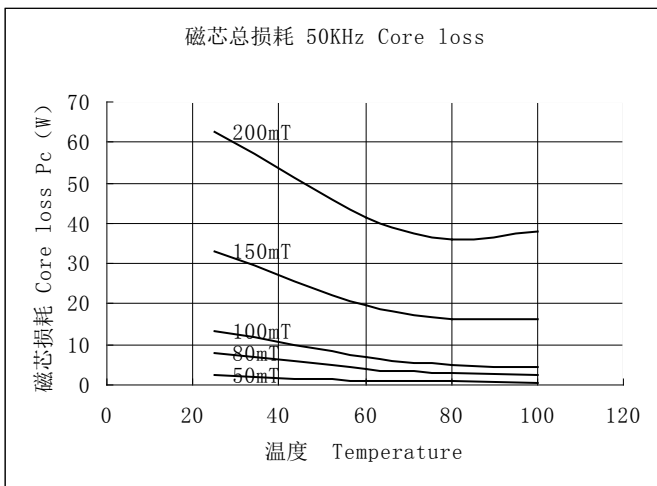


H144/108/25

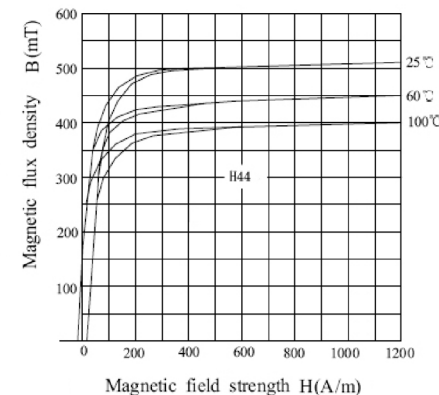
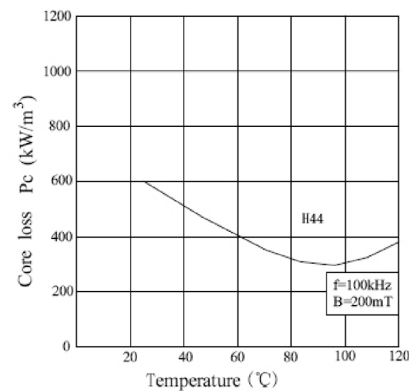
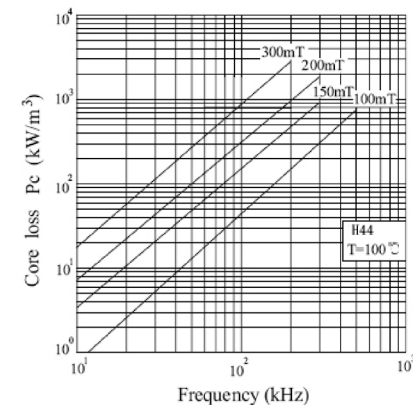
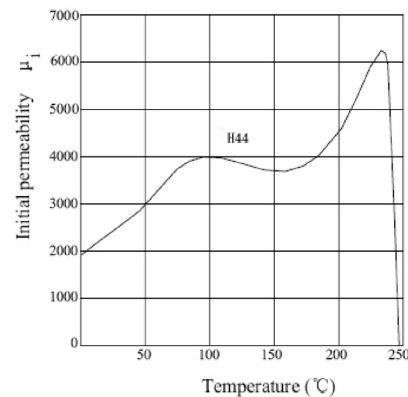


A	144 ± 4mm
B	108 ± 3mm
C	25 ± 0.5mm

Parameter(参数)	Symbol (标示)	Value (数据)		Unit (单位)
Type of Material (材料类型)		H40	HK5	
Core constant(磁芯常数)	C1	0.873	0.873	mm ⁻¹
Effective path length (有效长度)	Le	390	390	mm
Effective area (有效截面积)	Ae	447	447	mm ²
Effective volume (有效体积)	Ve	174488	174488	mm ³
Inductance factor(电感因数)	AL	3200	7200	nH/N ²
Weight (重量)	W	900	900	g
Other name (其他名称)				
Product code (产品编码)				



Initial permeability	μ_i		2400±25%	
Relative loss factor	$\tan\delta/\mu_i$	$\times 10^{-6}$		
Saturation flux density	Bs	mT	25°C	510
			100°C	400
			(1194A/m)	
Remanence	Br	mT	110	
Coercivity	Hc	A/m	13	
Power loss (f=16kHz, B=150mT)	Pc	kW/m ³	25°C	
			60°C	
			80°C	
			100°C	
Power loss (f=25kHz, B=200mT)	Pc	kW/m ³	25°C	
			60°C	
			80°C	
			100°C	
Power loss (f=100kHz, B=200mT)	Pc	kW/m ³	25°C	600
			60°C	400
			80°C	
			100°C	300
Power loss (f=500kHz, B=50mT)	Pc	kW/m ³	25°C	
			60°C	
			80°C	
			100°C	
Curie temperature	Tc	°C	> 230	
Resistivity	ρ	$\Omega \cdot m$	6.5	
Density	d	kg/m ³ × 10 ³	4.8	



LEPCOS (NWL)
<http://ferrite.ru>

ХАРАКТЕРИСТИКИ МАТЕРИАЛА

H44