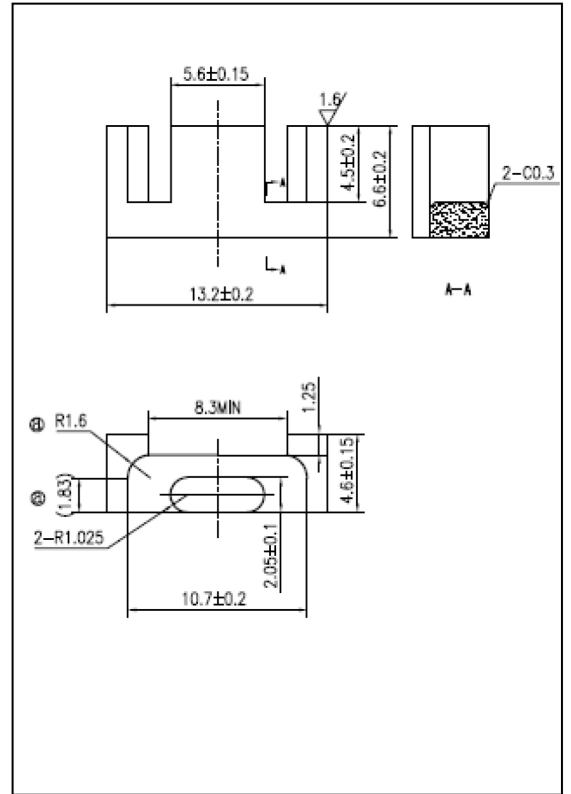


CORE SETS

Effective core parameters

SYMBOL	PARAMETER	VALUE	UNIT
$\Sigma (1/A)$	core factor (C_1)	2.27	mm^{-1}
Ve	effective volume	510.00	mm^3
le	effective length	34.00	mm
Ae	effective area	15.00	mm^2
Amin	minimum area	12.20	mm^2
Wt	mass of core set	≈ 2.8	g



Characteristic

GRADE	AL (nH/N ²)	B (mT)	CORE LOSS (W)
	f=10kHz U=0.25V	H=250A/m f=25kHz T=100°C	f=100kHz B=200mT T=100°C
DMR40	800 ± 25%	≥ 290	≤ 0.41
DMR44	800 ± 25%	≥ 290	≤ 0.31
DMR47	850 ± 25%	≥ 300	≤ 0.26
DMR95	1100 ± 25%	≥ 290	≤ 0.28