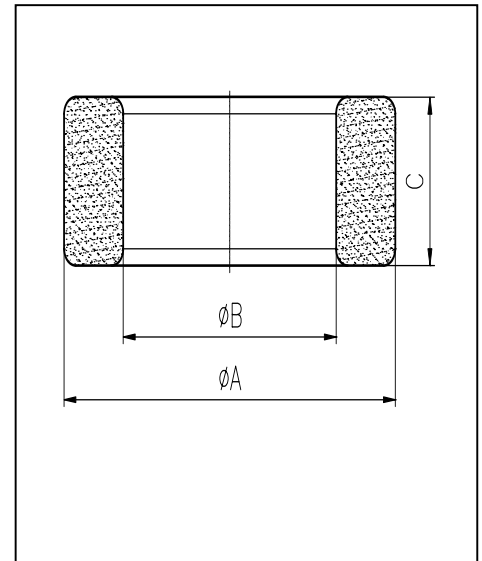


**CORE SETS**
**Effective core parameters**

SYMBOL	PARAMETER	VALUE	UNIT
$\Sigma (1/A)$	core factor ( $C_1$ )	0.65	$\text{mm}^{-1}$
$V_e$	effective volume	22361.68	$\text{mm}^3$
$l_e$	effective length	120.36	mm
$A_e$	effective area	185.79	$\text{mm}^2$
$W_t$	mass of core	$\approx 114.6$	g



尺寸	A	B	C
Coat			
Uncoat	$50.0 \pm 0.6$	$30.0 \pm 0.5$	$19.0 \pm 0.4$
Coated	51.2max	29.0min	20.0max

**Note: With grass green epoxy coating**

**Characteristic**

GRADE	AL ( $\text{nH}/\text{N}^2$ )	B (mT)	CORE LOSS (W)
		f=10kHz U=0.25V	H=250A/m f=25kHz T=100°C
DMR40	$4460 \pm 25\%$	$\geq 315$	$\leq 18.1$
DMR44	$4460 \pm 25\%$	$\geq 315$	$\leq 16.6$
DMR95	$6400 \pm 25\%$	$\geq 315$	$\leq 16.0$

GRADE	AL ( $\text{nH}/\text{N}^2$ )	$\mu_i$
		f=10kHz U=0.25V
R10K	$18000 \pm 30\%$	$\approx 10000$
R12K	$\geq 14530$	$\approx 12000$