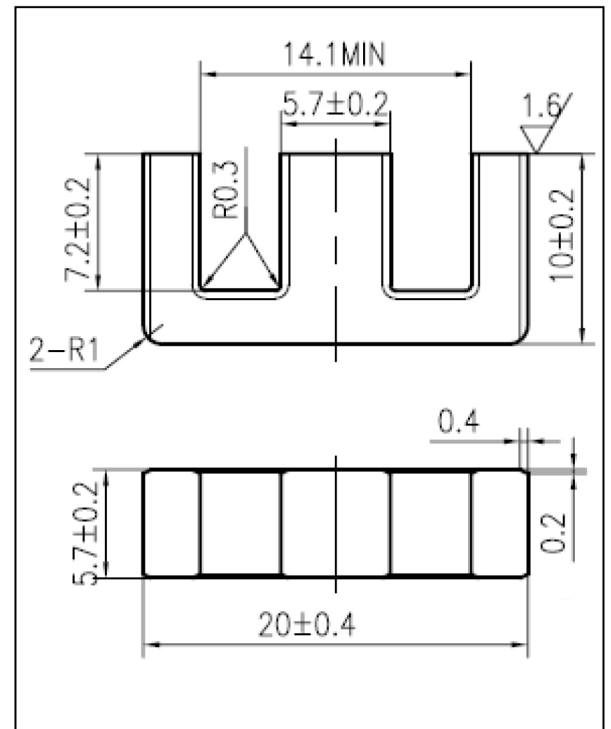


CORE SETS

Effective core parameters

SYMBOL	PARAMETER	VALUE	UNIT
$\Sigma (1/A)$	core factor (C_1)	1.45	mm^{-1}
V_e	effective volume	1472.0	mm^3
l_e	effective length	46.0	mm
A_e	effective area	32.0	mm^2
A_{\min}	minimum area	31.04	mm^2
W_t	mass of core set	≈ 7.2	g



Characteristic

GRADE	AL (nH/N ²)	B (mT)	CORE LOSS (W)
	f=10kHz U=0.25V	H=250A/m f=25kHz T=100°C	f=100kHz B=200mT T=100°C
DMR40	1400 ± 25%	≥ 250	≤ 0.97
DMR44	1400 ± 25%	≥ 250	≤ 0.79
DMR95	2000 ± 25%	≥ 270	≤ 0.78

GAP

GRADE	GAP (mm)	AL (nH)
DMR44	0.09	≈ 353 ± 3%
DMR44	0.10	≈ 345 ± 3%
DMR44	0.17	≈ 227 ± 3%
DMR44	0.25	≈ 172 ± 3%
DMR44	0.50	≈ 102 ± 3%
DMR44	1.00	≈ 60 ± 3%