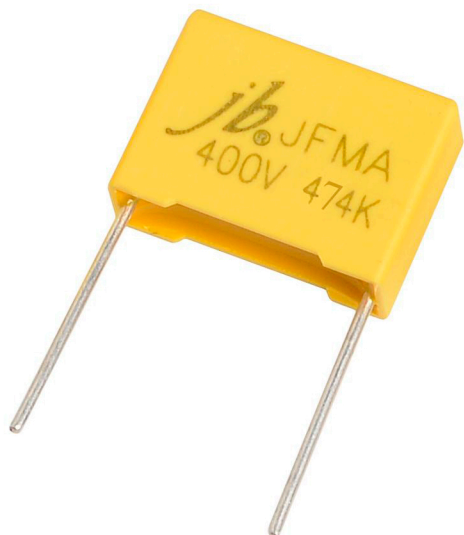


Metallized Polypropylene Film A.C.Capacitor For Capacitive Divider – JFMA



FEATURES

- Metallized polypropylene film, non-inductive wound construction.
- Good self-healing properties, withstanding surge voltage stressing.
- Long stability of capacitance.
- Good properties in damp environment.
- Excellent active and passive flame resistant abilities.

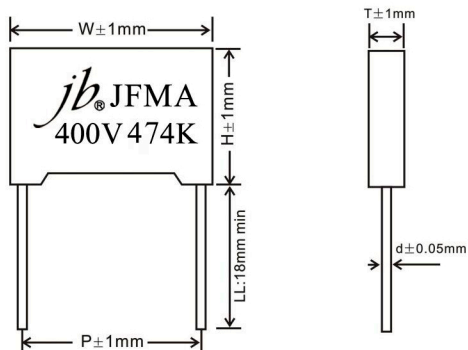
Type Application

Suitable for applications in serial with the 100~240Vac mains, as energy meter, a small power LED driver module, small household electrical appliances control panel (electric kettle, electric cooker, coffee machine, hair straightener etc.), thermostat, replace the transformer.

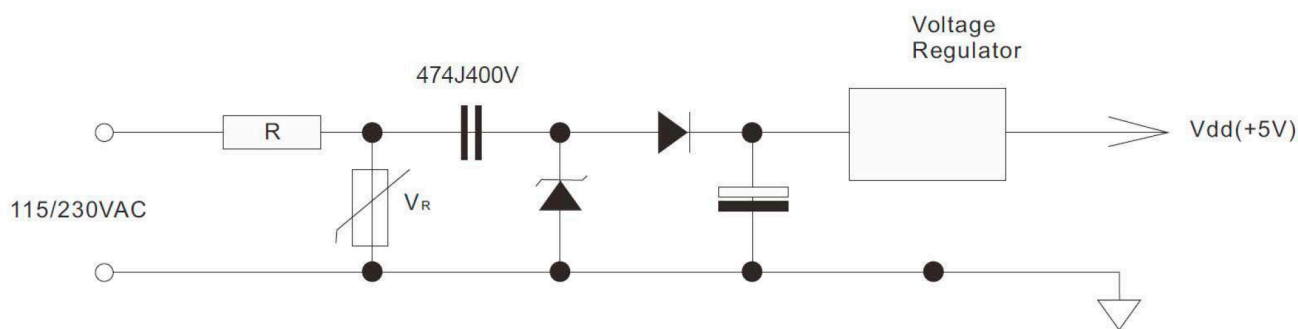
Widely used in LC resonant, high frequency high current situation

SPECIFICATIONS

Reference Standard	GB/T 14579 (IEC 60384-17)			
Climatic Category	40/105/56 B			
Rated Temperature	105°C			
Operating Temperature	-40°C~+105°C			
Rated Voltage(50/60Hz)	160Vac	230Vac	250Vac	275Vac/300Vac
Maximum Continuous DC Voltage	400Vdc		630Vdc	
Voltage Proof	1.6UR (5S)			
Capacitance Range	0.1uF~4.7uF			
Capacitance Tolerance	±5% (J), ±10% (K)			
Insulation Resistance	R≥15000MΩ CN≤0.33μF			
	R≥5000s CN>0.33μF			
	(20°C, 100V, 1min)			
Dissipation Factor	≤0.1% (20°C, 1KHz)			



Note: For long life time and continuous working, please choose 275Vac and upwards voltage.





Just your best choice

Metallized Polypropylene Film A.C.Capacitor For Capacitive Divider – JFMA

STANDARD SIZE (mm)										
μF	400VDC					630VDC				
	W	H	T	P	d	W	H	T	P	d
	±1.0	±1.0	±1.0	±1.0	±0.05	±1.0	±1.0	±1.0	±1.0	±0.05
0.1	18	11	5	15	0.6	18	12	6	15	0.8
						26.5	15	6	22.5	0.8
0.12	18	12	6	15	0.8	18	13.5	8	15	0.8
						26.5	16	7	22.5	0.8
0.15	18	12	6	15	0.8	18	13.5	7.5	15	0.8
						26.5	17	8.5	22.5	0.8
0.18	18	12	6	15	0.8	18	14.5	8.5	15	0.8
	26.5	15	6	22.5	0.8	26.5	17	8.5	22.5	0.8
	--	--	--	--	--	--	--	--	--	--
0.22	18	13.5	8	15	0.8	18	16	10	15	0.8
	26.5	15	6	22.5	0.8	26.5	19	10	22.5	0.8
						--	--	--	--	--
0.27	18	13.5	8	15	0.8	18	16	10	15	0.8
	26.5	15	6	22.5	0.8	26.5	22	12	22.5	0.8
	--	--	--	--	--	--	--	--	--	--
0.33	26.5	15	6	22.5	0.8	26.5	22	12	22.5	0.8
						--	--	--	--	--
0.39	26.5	17	7	22.5	0.8	26.5	22	12	22.5	0.8
	--	--	--	--	--	--	--	--	--	--
0.47	26.5	17	7	22.5	0.8	26.5	19	10	22.5	0.8
	--	--	--	--	--	--	--	--	--	--
0.56	26.5	17	8.5	22.5	0.8	--	--	--	--	--
	32	20	11	27.5	0.8					
0.68	26.5	19	10	22.5	0.8	--	--	--	--	--
	32	20	11	27.5	0.8					
0.82	26.5	19	10	22.5	0.8	--	--	--	--	--
	32	22	13	27.5	0.8	--	--	--	--	--
1.0	26.5	22	12	22.5	0.8	--	--	--	--	--
	--	--	--	--	--	--	--	--	--	--

Please visit our website to get more update data, those data & specification are subject to change without notice.