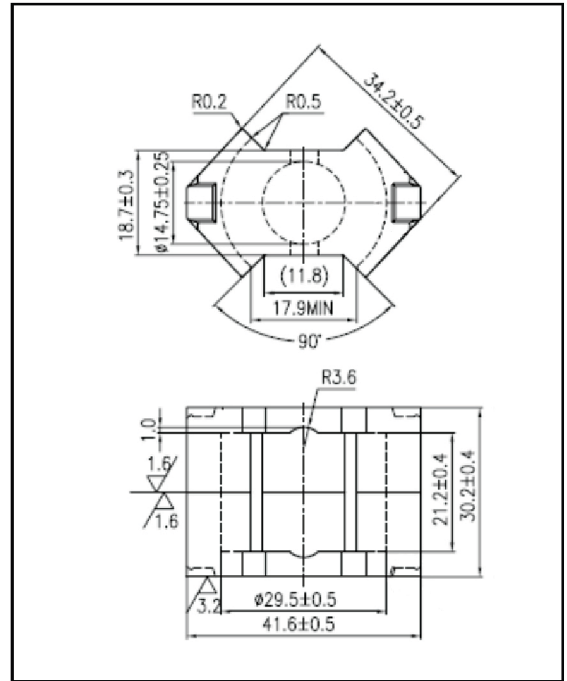
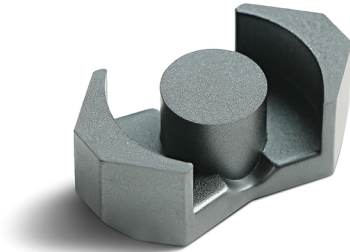


CORE SETS

Effective core parameters

SYMBOL	PARAMETER	VALUE	UNIT
$\Sigma (1/A)$	core factor (C_1)	0.34	mm^{-1}
V_e	effective volume	13400.0	mm^3
l_e	effective length	67.0	mm
A_e	effective area	200.0	mm^2
A_{min}	minimum area	170.9	mm^2
W_t	mass of core set	≈ 72.0	g



Characteristic

GRADE	AL (nH/N ²)	B (mT)	CORE LOSS (W)
	f=10kHz U=0.25V	H=250A/m f=25kHz T=100°C	f=100kHz B=200mT T=100°C
DMR44	5500 ± 25%	≥ 315	≤ 8.64

GAP

GRADE	AL (nH)	μ_e	GAP (mm)
DMR44	160 ± 3%	43	1.70
DMR44	250 ± 5%	71	1.27
DMR44	400 ± 5%	112	0.70
DMR44	630 ± 5%	177	0.40
DMR44	1000 ± 5%	270	0.24