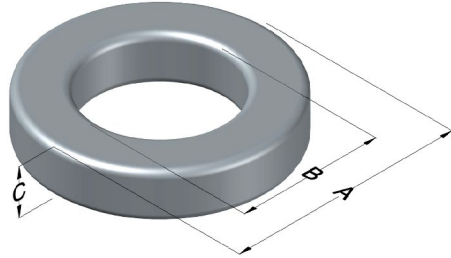




**0055033A2**

110 Delta Drive  
 Pittsburgh, PA 15238  
 NAFTA Sales: (1)800-245-3984  
 HK Sales : (852)3102-9337  
 magnetics@spang.com  
 www.mag-inc.com



MPP Permeability ( $\mu$ )	$A_L$ (nH/T <sup>2</sup> )	Core Marking			Coating Color
		Lot Number	Part Number	Inductance Grade	
14	6 ± 8%	XXXXXX	033A2	N/A	Gray

Dimensions	Uncoated		Coated Limits			Packaging
	(mm)	(in)	(mm)	(in)		
OD (A)	7.87	0.310	8.51	0.335	max	Bulk Pack 4 bags/box Box Qty= 10,000 pcs
ID (B)	3.96	0.156	3.45	0.136	min	
HT (C)	3.18	0.125	3.81	0.150	max	

Electrical Characteristics			Physical Characteristics						
Watt Loss @ 100 kHz, 100mT max(mW/cm <sup>3</sup> )	DC Bias min (A-T/cm)		Voltage Breakdown wire to wire min (V <sub>AC</sub> )	Break Strength min (kg)	Window Area W <sub>A</sub> (mm <sup>2</sup> )	Cross Section A <sub>e</sub> (mm <sup>2</sup> )	Path Length L <sub>e</sub> (mm)	Volume V <sub>e</sub> (mm <sup>3</sup> )	Weight (g)
	80%	70%							
3000	170	214	1000	4.5	9.35	5.99	17.9	107	0.74

Winding Information					Temperature Rating	
Winding Length Per Turn				Wound Coil Dimensions (mm)		Curie Temp: 460°C
Winding Factor	(mm)	Winding Factor	(mm)	Maximum OD (70%)	11.0	Coating Temp (Continuous up to): 200°C
				Maximum HT (70%)	6.73	
0%	12.7	40%	14.5	Surface Area (mm <sup>2</sup> )		Notes:
20%	13.6	45%	14.7	Unwound Core		
25%	13.8	50%	15.0	40% Winding Factor		
30%	14.0	60%	15.5			
35%	14.3	70%	16.1			

### Typical DC Bias Performance

