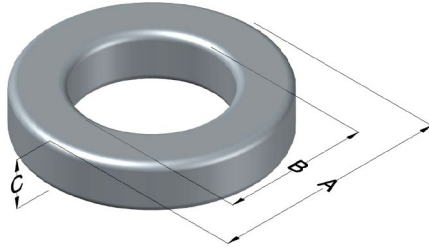




C055894A2

110 Delta Drive
 Pittsburgh, PA 15238
 NAFTA Sales: (1)800-245-3984
 HK Sales : (852)3102-9337
 magnetics@spang.com
 www.mag-inc.com



| MPP Permeability (μ) | A_L (nH/T ²) | Core Marking | | | Coating Color |
|----------------------------|----------------------------|--------------|-------------|------------------|---------------|
| | | Lot Number | Part Number | Inductance Grade | |
| 60 | 75 \pm 8% | XXXXXX | 55894A2 | X | Gray |

| Dimensions | Uncoated | | Coated Limits | | | Packaging |
|------------|----------|-------|---------------|-------|-----|--|
| | (mm) | (in) | (mm) | (in) | | |
| OD (A) | 26.90 | 1.060 | 27.69 | 1.090 | max | Cardboard cut-outs Box Qty= 400 pcs |
| ID (B) | 14.7 | 0.580 | 14.1 | 0.555 | min | |
| HT (C) | 11.2 | 0.440 | 12.0 | 0.470 | max | |

| Electrical Characteristics | | | Physical Characteristics | | | | | | |
|---|----------------------|------|---|-------------------------|---|---|---------------------------------|--|------------|
| Watt Loss @ 100 kHz, 100mT max(mW/cm ³) | DC Bias min (A-T/cm) | | Voltage Breakdown wire to wire min (V _{AC}) | Break Strength min (kg) | Window Area W _A (mm ²) | Cross Section A _e (mm ²) | Path Length L _e (mm) | Volume V _e (mm ³) | Weight (g) |
| | 80% | 50% | | | | | | | |
| 950 | 39.7 | 74.7 | 1000 | 48 | 156 | 65.4 | 63.5 | 4,150 | 34 |

| Winding Information | | | | Temperature Rating | |
|-------------------------|------|----------------|------|---|-------|
| Winding Length Per Turn | | | | Wound Coil Dimensions (mm) | |
| Winding Factor | (mm) | Winding Factor | (mm) | Curie Temp: 460 °C | |
| | | | | Coating Temp (Continuous up to): 200 °C | |
| | | | | Notes: | |
| 0% | 37.5 | 40% | 44.6 | Maximum OD (70%) | 37.3 |
| 20% | 41.1 | 45% | 45.7 | Maximum HT (70%) | 24.0 |
| 25% | 41.9 | 50% | 46.6 | Surface Area (mm ²) | |
| 30% | 42.8 | 60% | 48.8 | Unwound Core | 2,470 |
| 35% | 43.8 | 70% | 51.3 | 40% Winding Factor | 3,380 |

Typical DC Bias Performance

