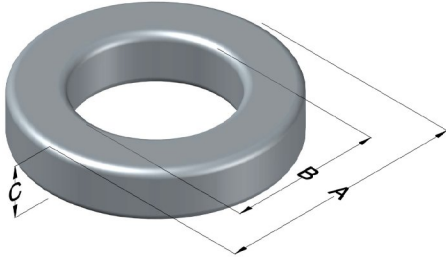




0077089A7

110 Delta Drive
 Pittsburgh, PA 15238
 NAFTA Sales: (1)800-245-3984
 HK Sales : (852)3102-9337
 magnetics@spang.com
 www.mag-inc.com



Kool M μ Permeability (μ)	A _L (nH/T ²)	Core Marking			Coating Color
		Lot Number	Part Number	Inductance Grade	
125	178 ± 8%	XXXXXX	77089A7	N/A	Black

Dimensions	Uncoated		Coated Limits		Packaging
	(mm)	(in)	(mm)	(in)	
OD (A)	46.70	1.840	47.63	1.875	Cardboard cut-outs Box Qty= 120 pcs
ID (B)	28.70	1.130	27.88	1.098	
HT (C)	15.2	0.600	16.2	0.635	

Electrical Characteristics			Physical Characteristics						
Watt Loss @ 100 kHz, 100mT max(mW/cm ³)	DC Bias min (A·T/cm)		Voltage Breakdown wire to wire min (V _{AC})	Break Strength min (kg)	Window Area W _A (mm ²)	Cross Section A _e (mm ²)	Path Length L _e (mm)	Volume V _e (mm ³)	Weight (g)
	1400	80%							
	10.7	27.8							

Winding Information					Temperature Rating	
Winding Length Per Turn				Wound Coil Dimensions (mm)		Curie Temp: 500°C
Winding Factor	(mm)	Winding Factor	(mm)	Maximum OD (70%)	66.3	Coating Temp (Continuous up to): 200°C
				Maximum HT (70%)	39.8	
0%	52.0	40%	66.4	Surface Area (mm ²)		Notes:
20%	59.1	45%	68.2	Unwound Core		
25%	61.0	50%	70.4	40% Winding Factor		
30%	62.2	60%	74.7			
35%	64.5	70%	79.5			

