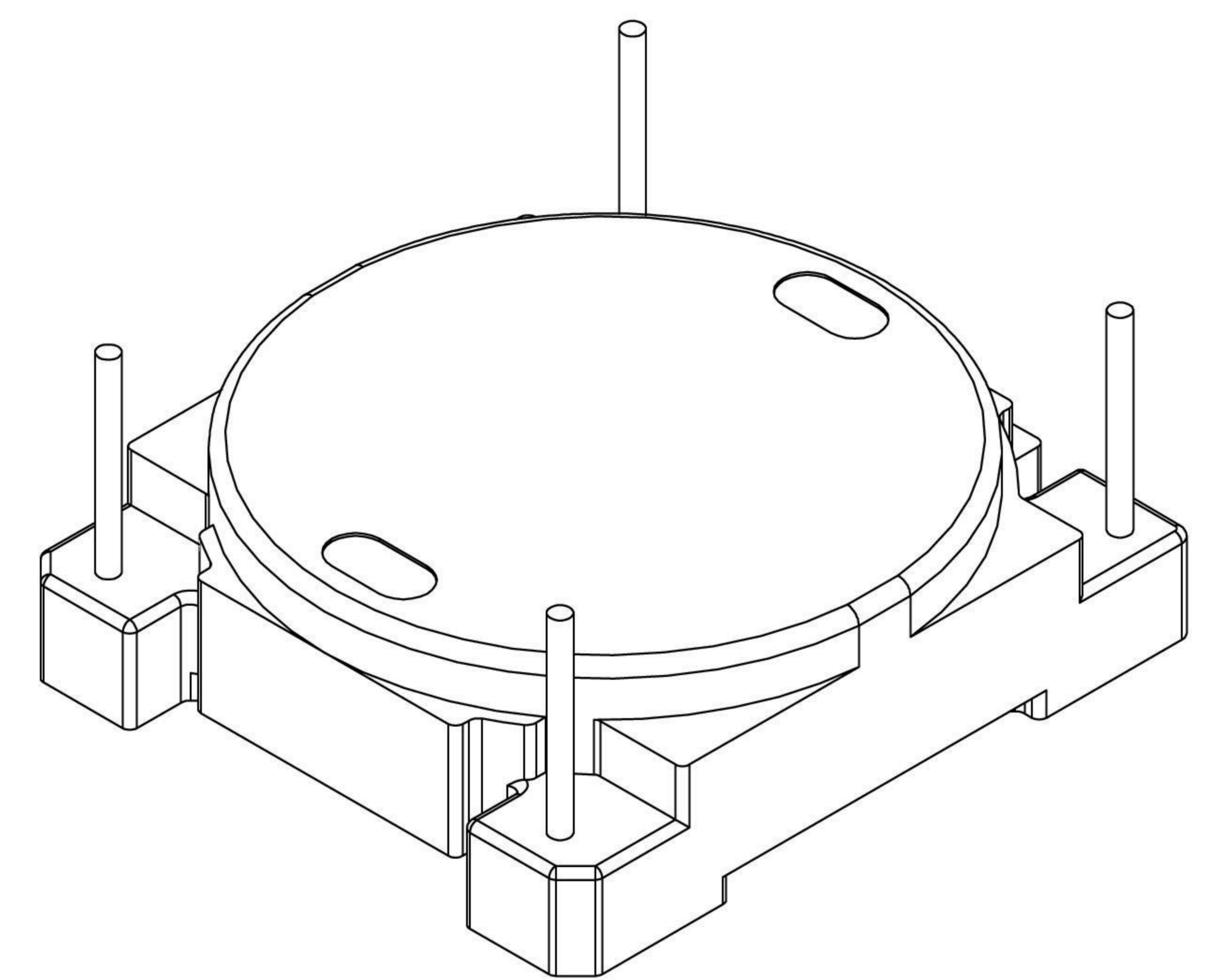
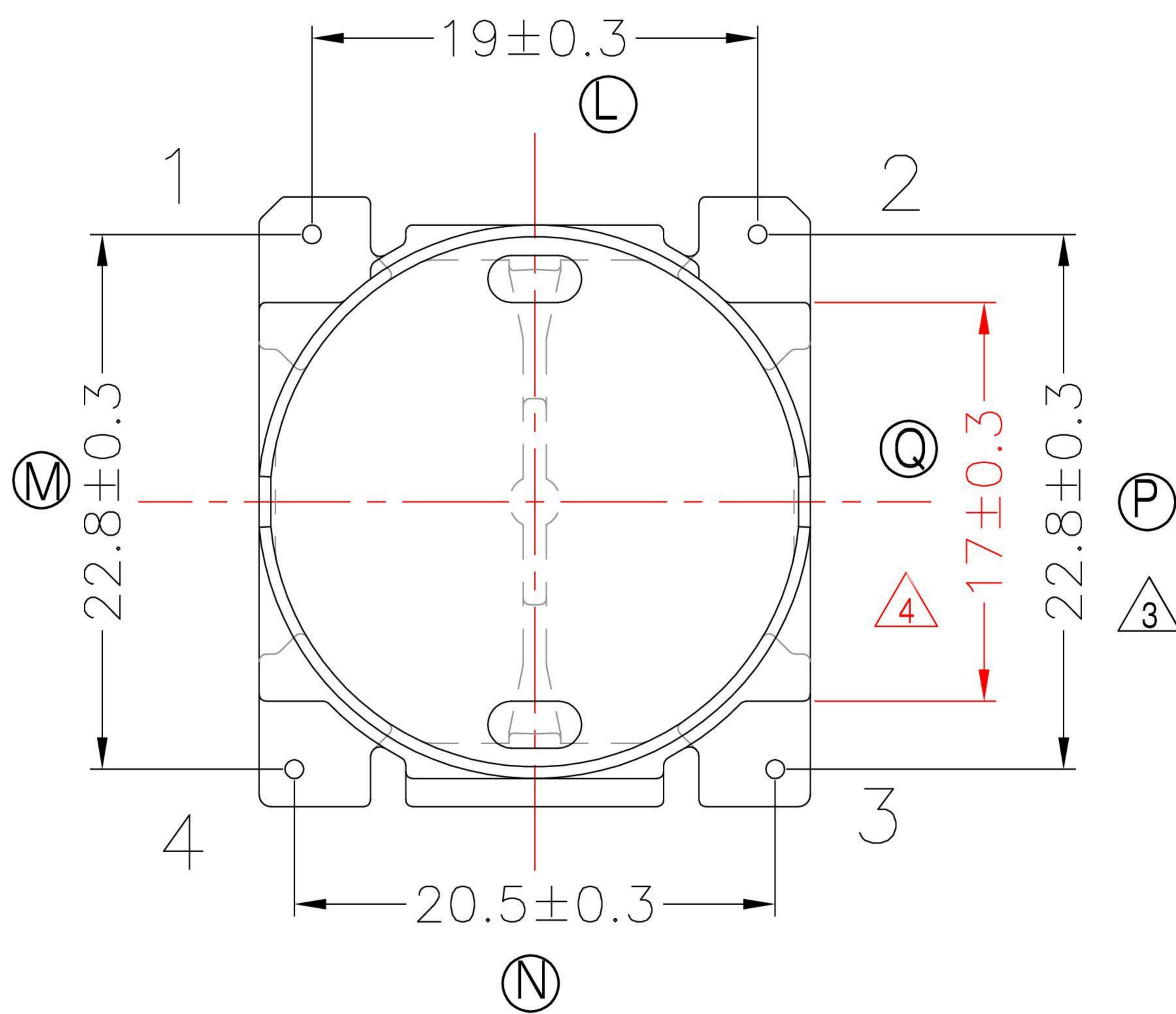
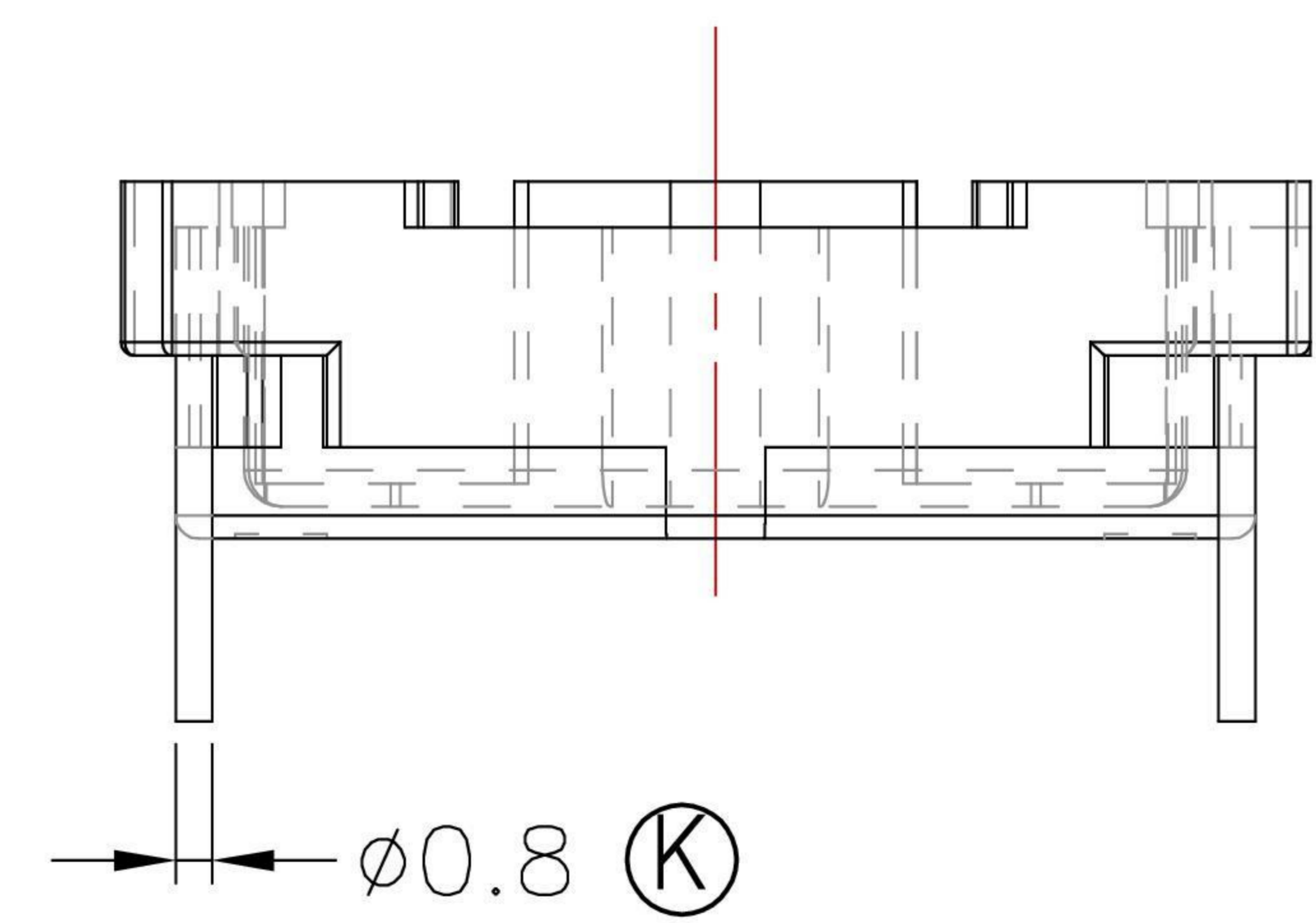
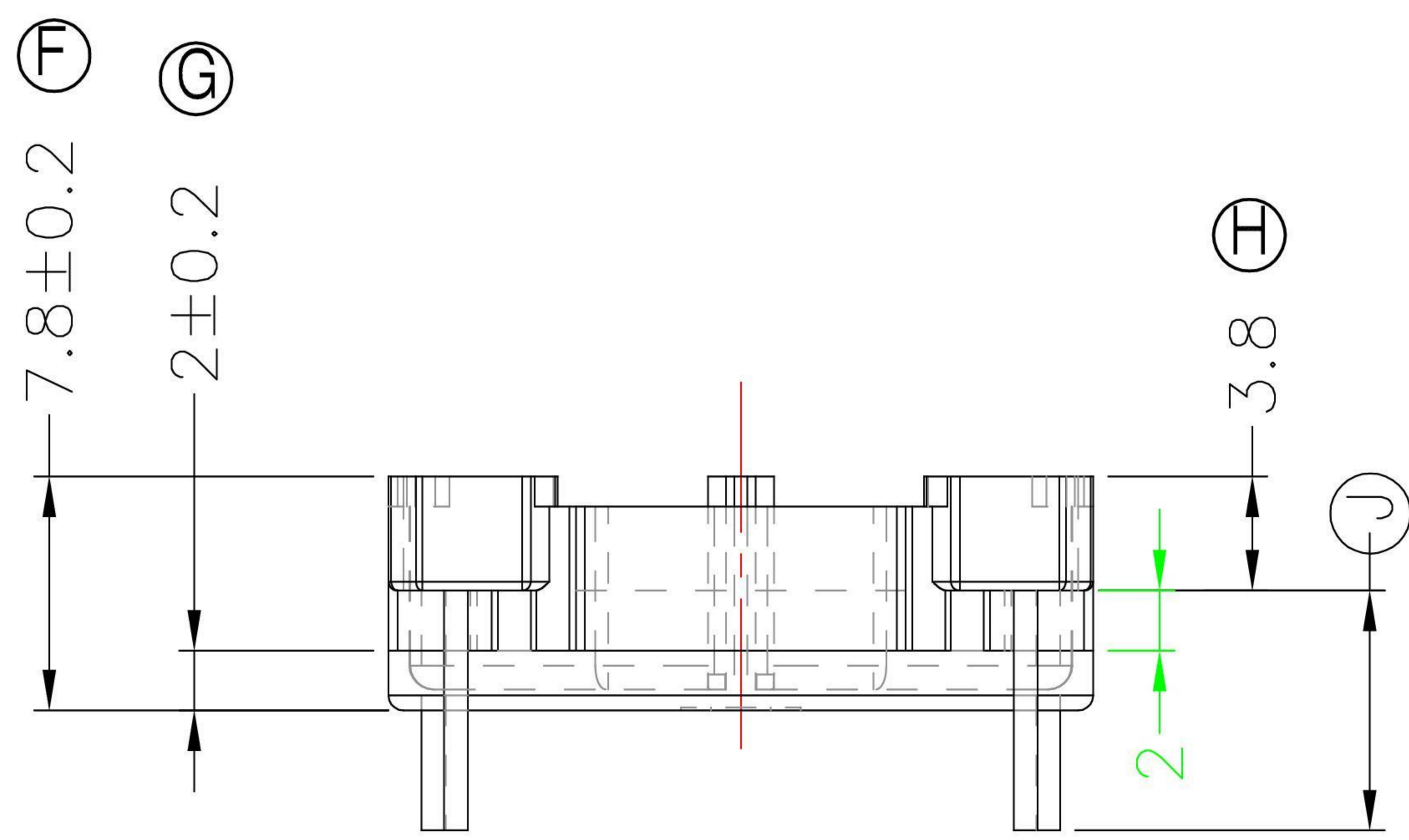
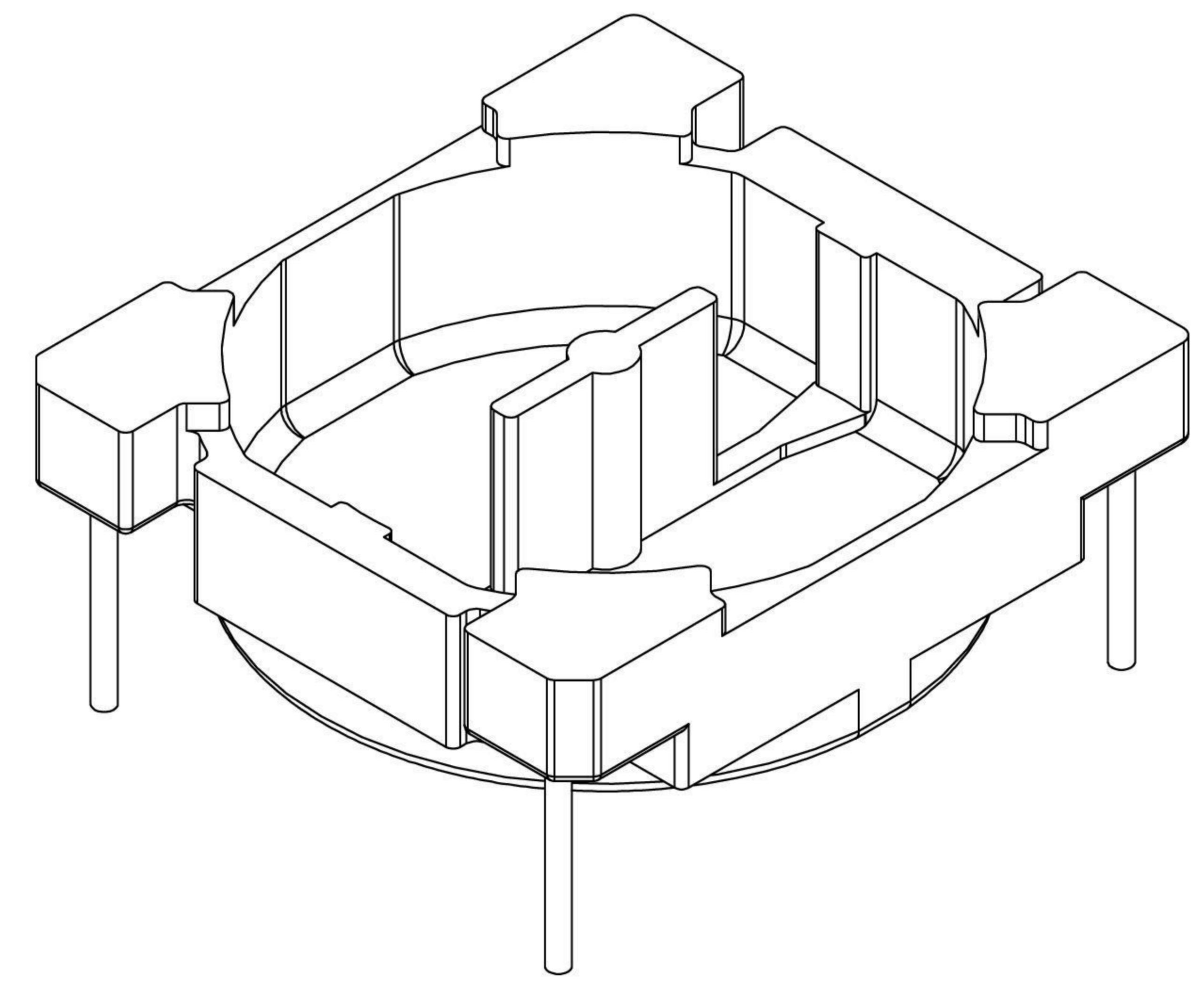
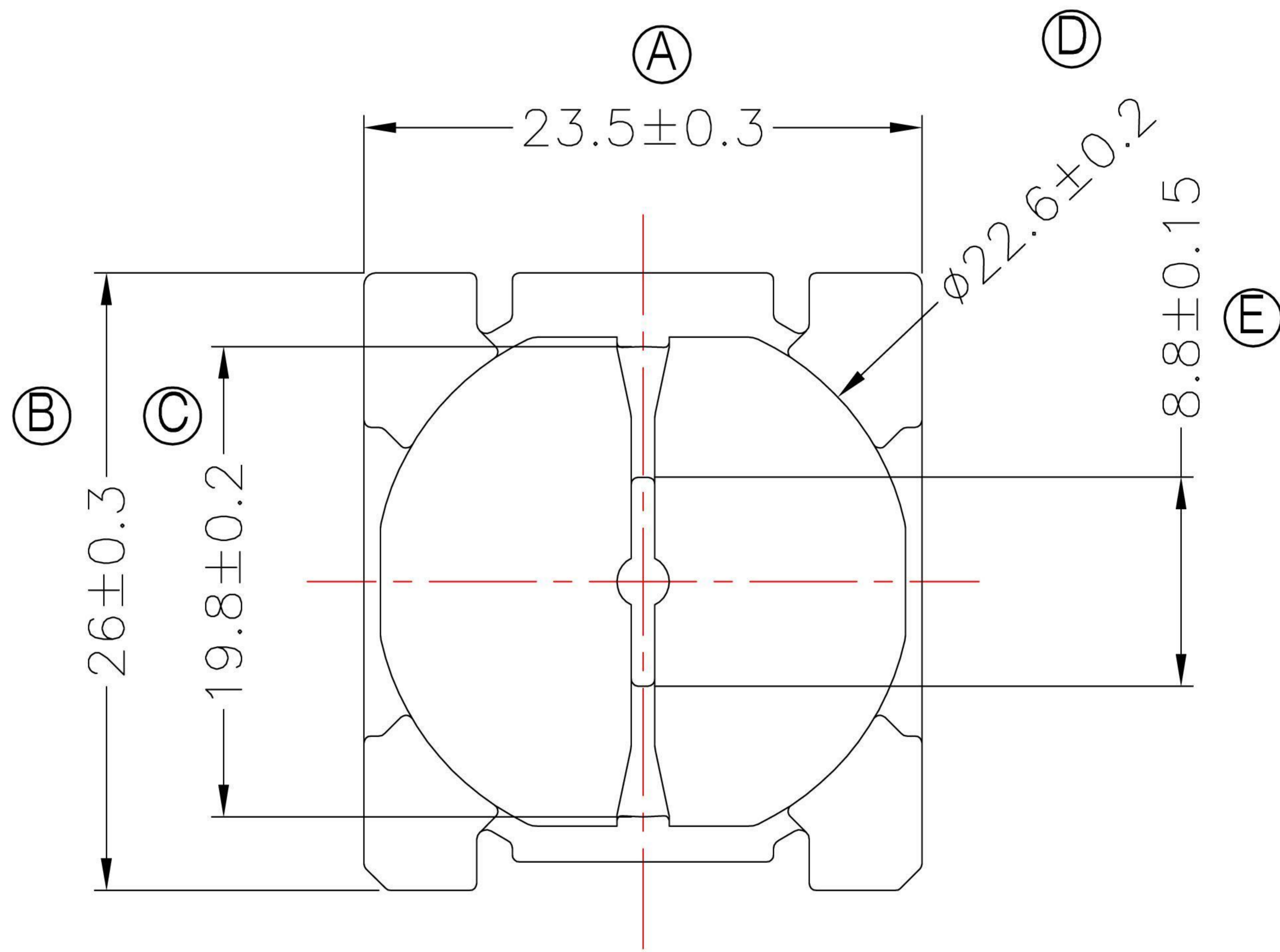


LEPCOS (North-West Laboratory)  
 www.ferrite.ru Tel/Fax +7-812-369-11-54  
 St-Petersburg, Russia

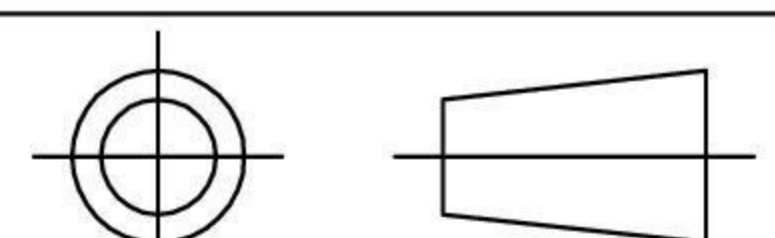
REVISIONS				
REV	SYM	DRAFTER	CHECKER	DATE
△2		X.H.GU	G.F.YANG	07/16/10
△3		X.H.GU	G.F.YANG	10/29/10
△4		X.H.GU	G.F.YANG	01/06/11



NOTE: 產品頂部共面度0.2 MAX;

DWG NO. OR18.5X4-9.8C-BASE-B2-12

PART NO.	MATERIAL (BOBBIN)	MATERIAL (TERMINAL)	TERMINAL (PLATING)	PIN ALLOCATION	NOTE
TBI-220-16221.1206	PM-9820	CP WIRE	Sn	ALL PIN (J) = 5.4±0.3 △3	S
TBI-220-16221.1216	PM-9820	CP WIRE	Sn	ALL PIN (J) = 8.0±0.3	H
TBI-220-16221.1226	PM-9820	CP WIRE	Sn	ALL PIN (J) = 8.8±0.3	



TOLERANCE: 0<L<=4:±0.1 4<L<=16:±0.2 16<L<=63:±0.3

UNIT : m / m

SCALE 1 : 1

Finish: 1. PB wire Immersion Sn on terminal : Thickness:Sn plating,100,5 μm (200 μ inches) min,Base nickel 0.625 μm (25 μ inches) min.  
 2. CP wire Immersion Sn on terminal : Thickness:Sn plating,100,5 μm (200 μ inches) min.  
 3. Coplanarity deviation: 0.10 mm (0.004 inches) max.

REV 4